



LOMBARDINI[®]
USA Inc.

"Your Partner, Not Your Competitor"

LDW 2204 CHD PLUS

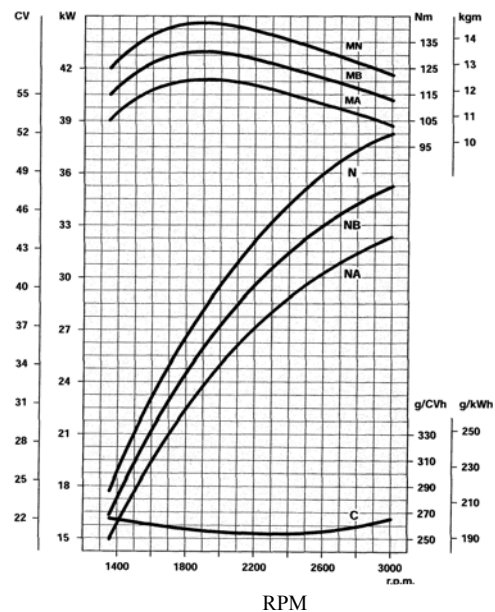
Low Speed Power Unit

INTERMITTENT HP RATING @ 1800 RPM
Nb. ISO 3046 (kW/HP) = 24.6/ 32.9

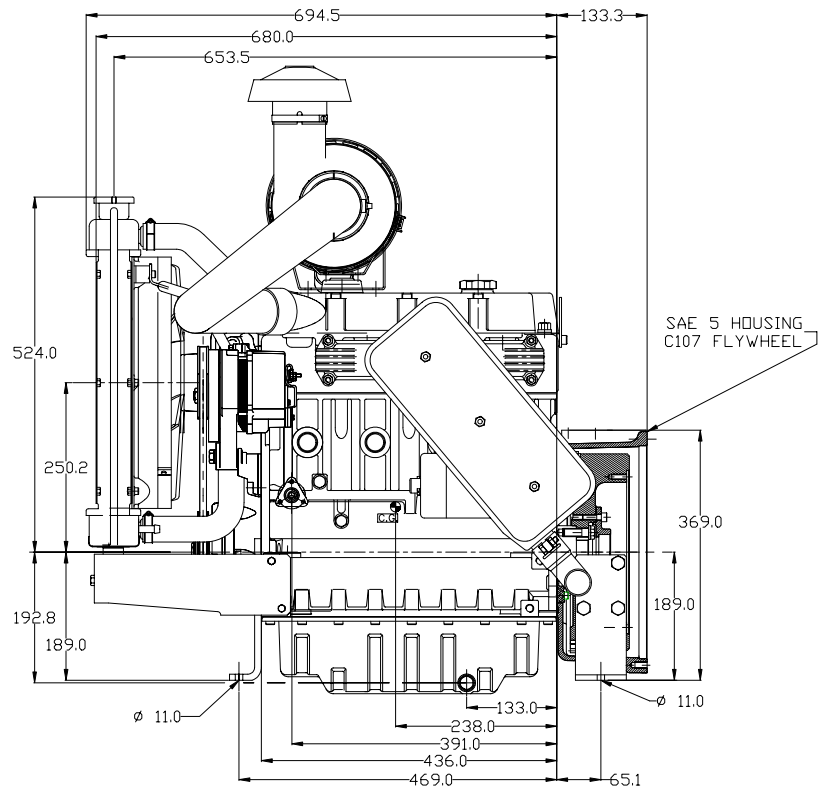
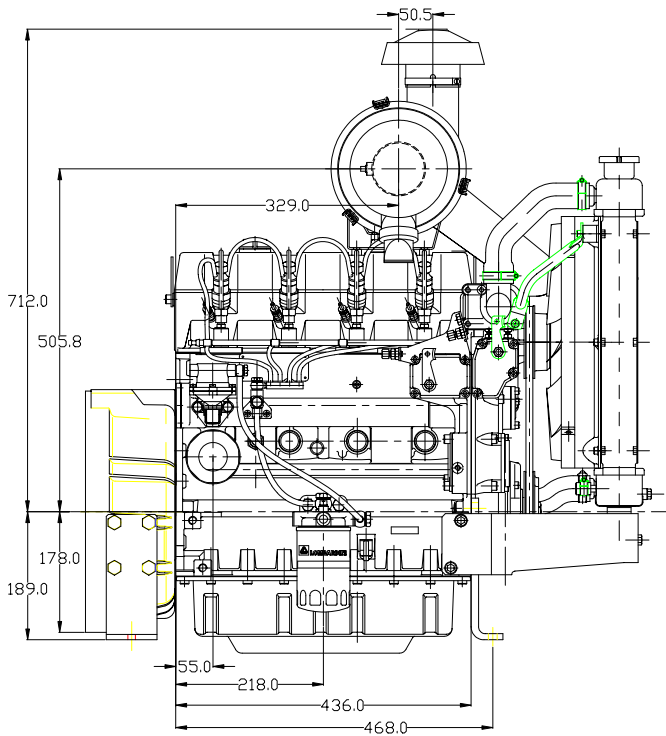
Low Speed Open Power Unit Includes: Base Engine, Mounted Top Tank Radiator, Radiator Fan Guard, Mounted Air Cleaner, Muffler, Muffler Guard, Pusher Fan, Fuel Filter w/ Valve, 12 Volt Electric Starter Motor, 45 Amp External Alternator, Mounting Feet, Mounted Control Panel, A-2 Regulation @ 1800 RPM, SAE 5 Housing, C 107 Flywheel

TECHNICAL SPECIFICATIONS:

NO. OF CYLS	4
BORE x STROKE (mm)	88 x 90.4
DISPLACEMENT (cc)	2199
OVERALL DIMS. L x W x H (mm)	828 x 577 x 921
MAX. SPEED (RPM)	1800
MIN. CONT. SPEED (RPM)	900
N. ISO 1585 (kW/HP)	26.6/ 35.7
Nb. ISO 3046 (kW/HP)	24.6/ 32.9
Na. ISO 3046 (kW/HP)	22.5/ 30.2
MAX TORQUE (Lb.FT/RPM)	105.1/1800
SPC. FUEL CON (g/kWh)	195
ACT. FUEL CONS (gal/h)	1.45
OIL SUMP CAPACITY (l./Qts.)	5.7/6
DRY WEIGHT (kg/lb.)	225/496

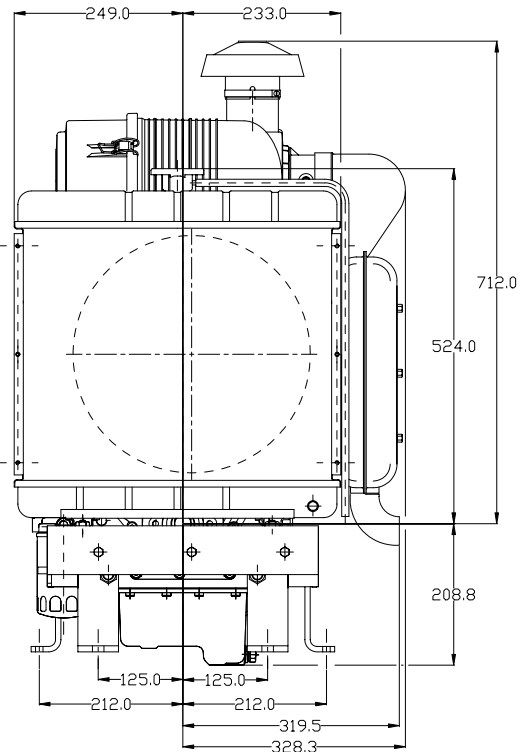


Lombardini USA Inc.
2150 Boggs Road, Building 300, Suite 300
Duluth, GA 30096
Tel: (770) 623-3554 FAX (770) 623-8833
E-mail- lusa@lombardiniusa.com
Internet- <http://www.lombardiniusa.com>



ACCESSORIES AVAILABLE:

- STARTING:** 12V ELECTRIC, OPTIONAL CHARGING SYSTEMS.
- POWER TAKE OFF:** SAE HOUSINGS & DRIVES, SHAFT EXTENSIONS, HYDRAULIC DRIVES.
- AIR CLEANERS:** DRY TYPE.
- EXHAUST FITTINGS:** VARIOUS DESIGN MUFFLERS & MANIFOLDS, MUFFLER GUARDS, LOOSE FLANGES.
- SAFETY SHUTDOWN SYSTEM:** FOR HIGH COOLANT TEMP AND LOW OIL PRESSURE
- FUEL SYSTEM:** REMOTE FUEL FILTERS, FUEL LIFT PUMP.
- COOLING SYSTEM:** ENGINE MOUNTED AND REMOTE RADIATORS, SUCTION AND PUSHER FANS.
- MISC:** MOUNTING FEET, CONTROL PANELS.



BASIC CONSTRUCTION DETAILS:

4 STROKE DIESEL, LIQUID COOLED, COUNTER CLOCKWISE ROTATION (PRIMARY PTO), INDIRECT FUEL INJECTION , PRESSURE LUBRICATION BY GEROTOR PUMP, FULL FLOW LUBE FILTER, AUTOMATIC EXTRA FUEL DEVICE FOR COLD START EASE, VARIABLE SPEED GOVERNOR, CAST IRON CRANKCASE WITH REBORABLE CYLINDERS, CAST IRON CYLINDER HEAD